

Technical Specifications

eXtreme System		
Input voltage	12V DC / 20W	
Power consumption	2,9 A	
Power supply		
Mains operation 110 - 240V / 50 - 60Hz	infinite operating time	
powerBelt (optional)	2 hours of operating time	
Dimensions		
eXtreme - width x height x depth	175mm x 100mm x 120mm	
eXtreme - weight	2.5kg incl. Light source	
iCase - width x height x depth	540mm x 480mm x 190mm	
iCase - weight	4.0kg	
Total weight (incl. accessories)	6,5kg	
Construction		
Frame	Aluminium	
Housing	durable PU, rubberised shock proofed corners	
Display		
TFT Display	4.0"	
Resolution	640 x 480 Pixel (VGA)	
Operator guidance		
Intuitive On-Screen Menu	via control panel	
Navigation	via control panel (arrow keys & OK button)	
Camera setting	Automatic & Manual Mode	
Image inversion	horizontal & vertical	
Text generator	single-line, 13 characters	
Menu language	English	
Documentation		
Memory card	CompactFlash® Type 1, FAT (2GB)	
Video systems	NTSC / PAL	
Resolution / image format - TIFF	640 x 480 Pixel (VGA)	
Interfaces		
Card slot	CompactFlash® Type 1, FAT (2GB)	
Light source		
Lamp	24 Watt Metal Halide	
Colour temperature	ca. 5500°K	
Intensity control	Manual Shutter	
Average lamp durability	500 Hours	
Videoscope		
Working length:	1.5m / 2.0m / 3.0m	
Articulation	2-way, +/- 120°	
Diameter	5.0mm	
Field of View	60°	
Direction of View	0° / 90° with Side View Tip	
Tube braid	Tungsten	
Operation environment		
Temperature	iCapture ^{smart}	-25°C / +45°C
	Lightsource	-25°C / +45°C
	extreme ^{scope}	-10°C / +80°C
Atmospheric Pressure	iCapture ^{smart}	1.3 at - splash proofed
	Lightsource	1.0 at
	extreme ^{scope}	1.0 at - liquid-tight
Relative humidity	0% - 95% non-condensing	
Storage environment		
Temperature	-20°C / +45°C	
Relative humidity	30% - 75% non-condensing	



C o n t a c t

IT Concepts GmbH
Gewerbestr. 17
D - 3 5 6 3 3 L a h n a u

Tel.: +49 (0) 6441 679299 - 0
Fax : +49 (0) 6441 679299 - 99

[www.itcworld.de]
info@itcworld.de



ITC_CAT_eXtreme_EN_190509_v1



eXtreme System

- Extraordinary performance
- Red hot value
- Advanced Videoscope Technology
- Developed for industrial applications
- Ultra compact and portable
- The eXtreme System weighs just 2.5kg
- Sturdy and reliable
- Plug & Play technology



IT Concepts GmbH - www.itcworld.de - info@itcworld.de

eXtreme System

The eXtreme System is an example of the innovation approach which IT Concepts has taken to develop easy to use high performance RVI equipment with an inexpensive price tag. The eXtreme System is the combination of the eXtreme Videoscope and the iCapture^{smart} image storage and display device. eXtreme Videoscopes employ advanced imaging technology to deliver extraordinary performance.

The iCapture^{smart} features a bright LCD display to view live video or stored still images. The eXtreme System is an economical alternative for demanding inspections which expose equipment to a lot of wear and tear. The fit, form and function of the eXtreme System together with its low price makes it a candidate for Remote Visual Inspection (RVI) programs which experience regular repairs and high operating costs.

Applications from A to Z

Astronautics	Building engineering	Power engineering	Security
Automotive engineering	Customs	Power plants	...
Aviation	Police	Process technology	



Portable



Crawling, creeping, climbing



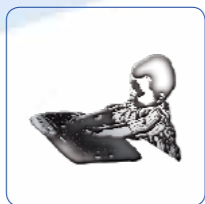
Tough



Reliable



4.0" light & bright display



Intuitive operation



Intelligent camera control



High performance illumination



Lightweight



Compact



powerBelt (option)



smartHold (option)



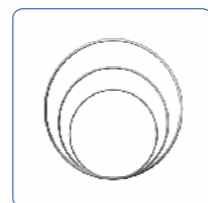
2-way articulation



Multiple layer insertion tube



1.0m - 3.0m working length



Diameter 5.0 mm



Left & Right-handed use



Fluid resistant



Sensitive controls



One-handed operation

iCapture^{smart}



The high intensity discharge 24W Metal Halide Light Source delivers excellent white light, which forms the basis to create the ideally illuminated inspection surroundings and realistic color reproduction.

Imaging Hub with 4.0" TFT Display: high-contrast, true to detail and easy to operate. The iCapture^{smart} combines user-friendly handling with exceptional performance in one compact unit. The simple keypad functions with direct action keys for all further operation modes allow high ease of use and quick learnability of all procedures. The bright 4.0" TFT Display with backlight is perfectly visible even with light incident or a high viewing angle. Horizontal and vertical image inversion helps to navigate through the item under inspection and is an indispensable feature when using a 90° side view tip.

eXtreme^{series}



Videoscope with 2-way articulation: precise, sturdy and reliable. The ergonomic handle allows precise mechanical tactile steering with short adjustment travel and sensitive setting to zero-point. Permanent deceleration of the controller cables is an important advantage of the mechanical control. As the endoscope needs no locking device, it can hardly be damaged while being removed of the inspected object. That is effectively reducing downtimes and avoids unnecessary costs for repair.

The resolution of the eXtreme Videoscope is in the region of seven times higher than a typical industrial Fiberscope. The world-exclusive IT Concepts eXtreme^{series} Videoscope opens up innovative ways of using Videoscope technology. Based on its tried-and-tested iSeries design, a high-performance videochip has been incorporated to the controllable scope head. The imaging performance of the eXtreme Videoscope often exceeds user expectations for such a low price professional grade system.

System Carrying Case



System Carrying Case: easy, quick and secure. A lightweight and practical case to hold all eXtreme System components. The inspection case is a robust and proofed solution for transport and mobile operations. As easy as the eXtreme System is removed it is restored in the case.